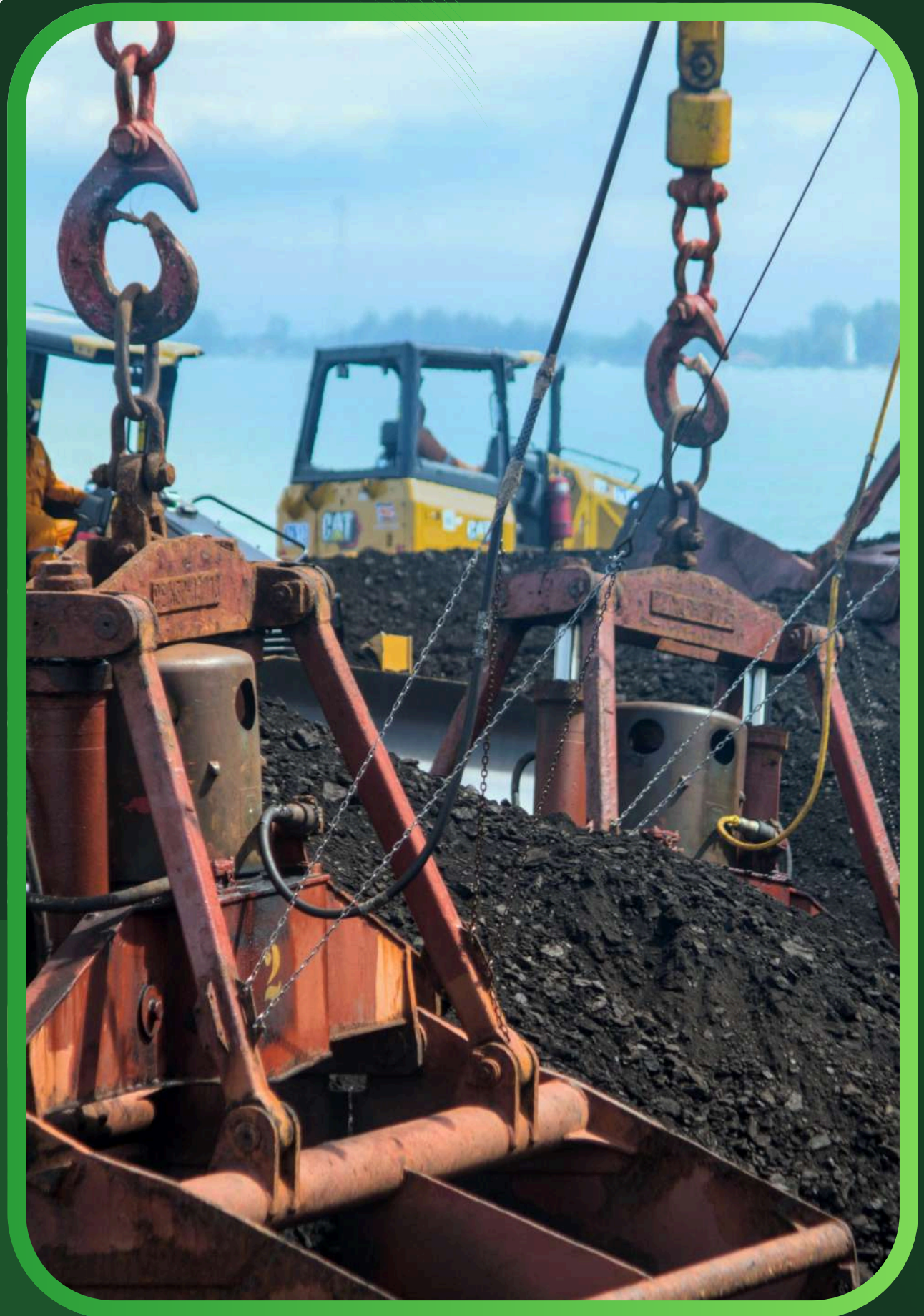




# PT Resource Alam Indonesia Tbk

PUBLIC EXPOSE

2026



[www.raintbk.com](http://www.raintbk.com)

## Disclaimer

---

These materials have been prepared by PT Resource Alam Indonesia Tbk (the “Company”) and have not been independently verified. While care has been taken in the preparation of these materials, no representation or warranty, express or implied, is made as to the accuracy, fairness, or completeness of the information contained herein, and no reliance should be placed on it.

The Company or any of its affiliates, advisers or representatives accepts no liability whatsoever for any loss howsoever arising from any information presented or contained in these materials. The information presented or contained in these materials is subject to change without notice and its accuracy is not guaranteed.

These materials contain statements that constitute forward looking statements. These statements include descriptions regarding the intent, belief or current expectations of the Company or its officers with respect to the consolidated results of operations and financial condition of the Company. These statements can be recognized by the use of words such as “expects,” “plan,” “will,” “estimates,” “projects,” or words of similar meaning. Such forward looking statements are not guarantees of future performance and involve risks and uncertainties, and actual results may differ from those in the forward looking statements as a result of various factors and assumptions. The Company has no obligation and does not undertake to revise forward looking statements to reflect future events or circumstances.

These materials are for information purposes only and do not constitute or form part of an offer, solicitation or invitation of any offer to buy or subscribe for any securities of the Company, in any jurisdiction, nor should it or any part of it form the basis of, or be relied upon in any connection with, any contract, commitment or investment decision whatsoever. Any decision to purchase or subscribe for any securities of the Company should be made after seeking appropriate professional advice.

# Three Business Pillars



## MINING



### COAL

Thermal coal mining and continued exploration activities.



### MINERALS

Mineral mining conducted in accordance with Good Mining Practice.



### CONTRACTING

Capacity expansion and business process improvement.



### LOGISTICS

Coal logistics, including coal transportation.



### TRADING

Mineral and coal trading.



## RENEWABLE ENERGY



### HYDROPOWER PLANT

Mini hydro power generation.



## PROPERTY



Developing quality and environmentally friendly property projects that make a positive contribution to surrounding communities.

# Company Overview



**PT Resource Alam Indonesia Tbk (IDX: KKGI)** is a diversified national energy company with subsidiaries engaged in mining, hydropower generation, and property development. Below are some of our key subsidiaries:



## PT INSANI BARAPERKASA

A third-generation Coal Contract of Work (PKP2B) company located in East Kalimantan, with a concession area of **24,477.6 hectares**, currently in the production stage. Total resources amount to 565.66 million MT, with total reserves of 139.26 million MT\*.



Loa Haur

## PT LOA HAUR

An IUP production operation located in Central Kalimantan, with a concession area of **4,810 hectares**. Total resources amount to 1.42 million MT, with total reserves of 0.28 million MT, containing CV 4,800–5,700 GAR across an area of 300 hectares.



## PT KHATULISTIWA HIDRO ENERGI

PT Bias Petrasia Persada, in which the Company holds a 99% ownership interest, has signed a Power Purchase Agreement (PPA) with PT PLN for a 6.4 MW project in Cicatih, West Java, and has been operating since October 2019.



## RAIN REALTY

A new business venture of PT Resource Alam Indonesia Tbk, operating as an owner, developer, and manager of integrated residential and commercial real estate.



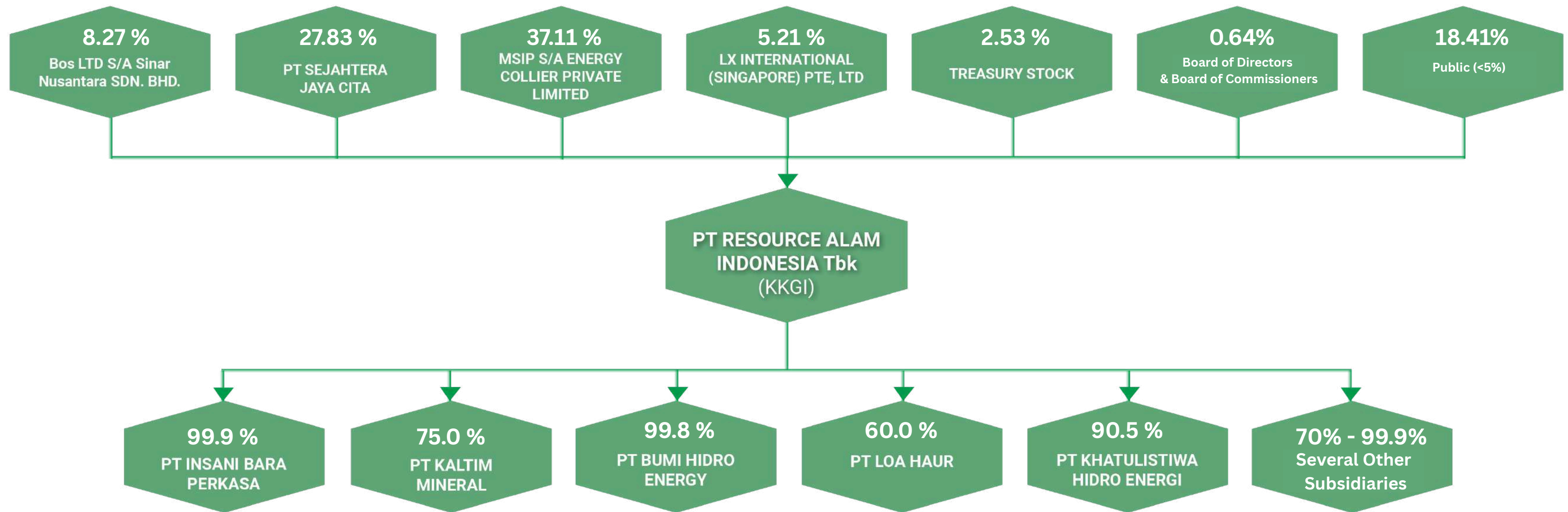
## PT TRANS BAHTERA PIONEER

**PT Resource Alam Indonesia Tbk (KKGI)** and **PT Trans Power Marine Tbk (TPMA)** have established PT Trans Bahtera Pioneer (TBP) to strengthen coal logistics activities in East Kalimantan.

**PKP2B** = Coal Contract of Work    **IUP** = Mining Business License

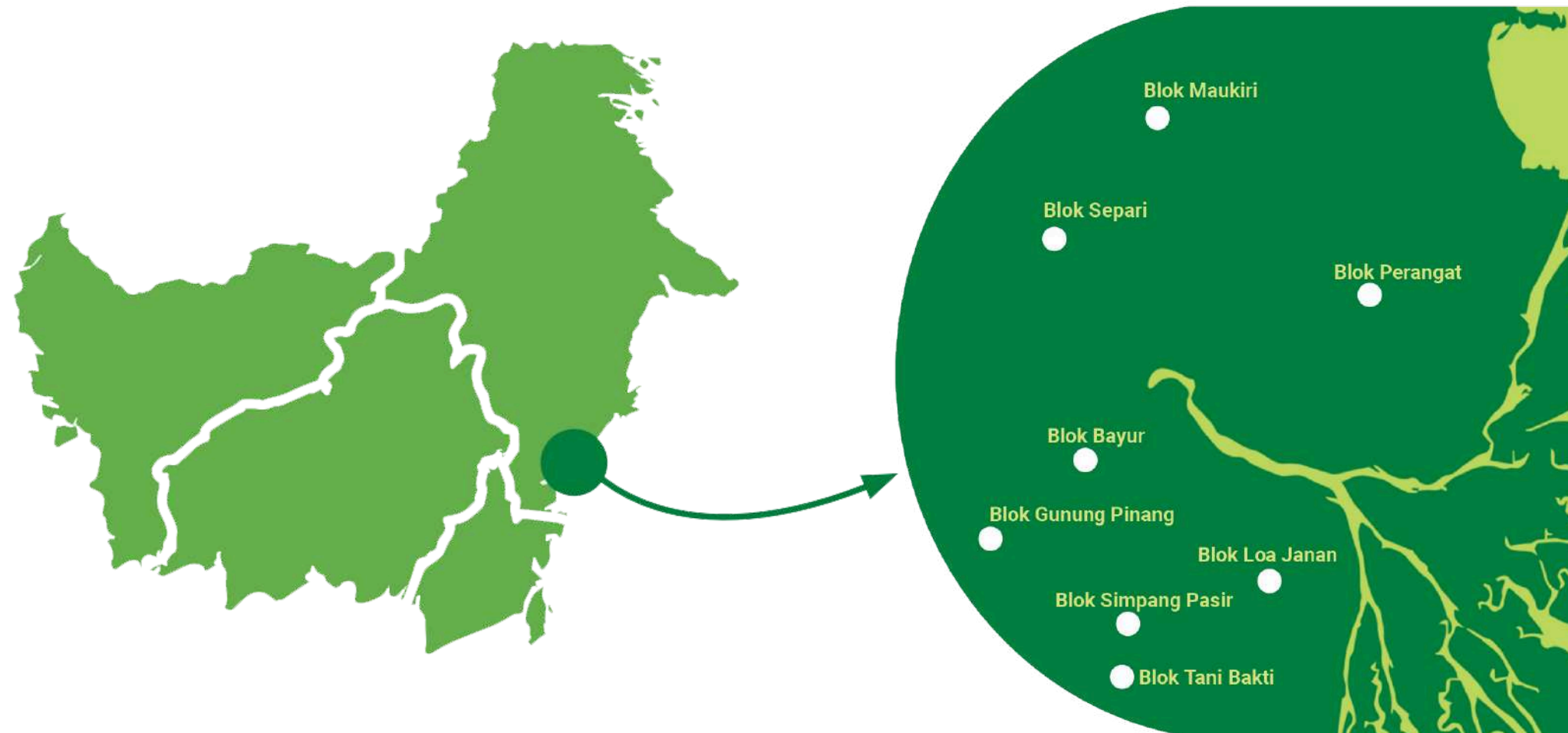
\*These estimates are subject to change depending on mineable area conditions and the potential economic benefits that may be realized in line with dynamic international market price trends.

# Corporate Structure : December 31, 2025



# Mine Location Map: PT Insani Baraperkasa

Total Concession Area: 24,477.6 Ha



# Mining Concession: PT Insani Baraperkasa



- PT Insani Baraperkasa is a holder of a third-generation PKP2B coal mining concession and has been in operation since 2006.
- In 2008, the entire PKP2B concession area of PT Insani Baraperkasa received approval to enter the Production stage from the Minister of Energy and Mineral Resources.
- Total concession area: 24,477.6 hectares.
- The PKP2B concession is valid until 2036 (30 years from the production licence issued in 2006), with an option for two extensions of 10 years each.
- The mine location is highly strategic, with an average hauling distance of 14–21 km, resulting in a relatively low hauling cost.
- The main mining contractors are PT Bukit Makmur Mandiri Utama (BUMA) and PT Arta Bumi Sakti (ABS).

# Mining Concession: PT Loa Haur

The calorific value of Loa Haur coal ranges from GAR 4,800 to GAR 5,700.



## Loa Haur 2026 Updates:

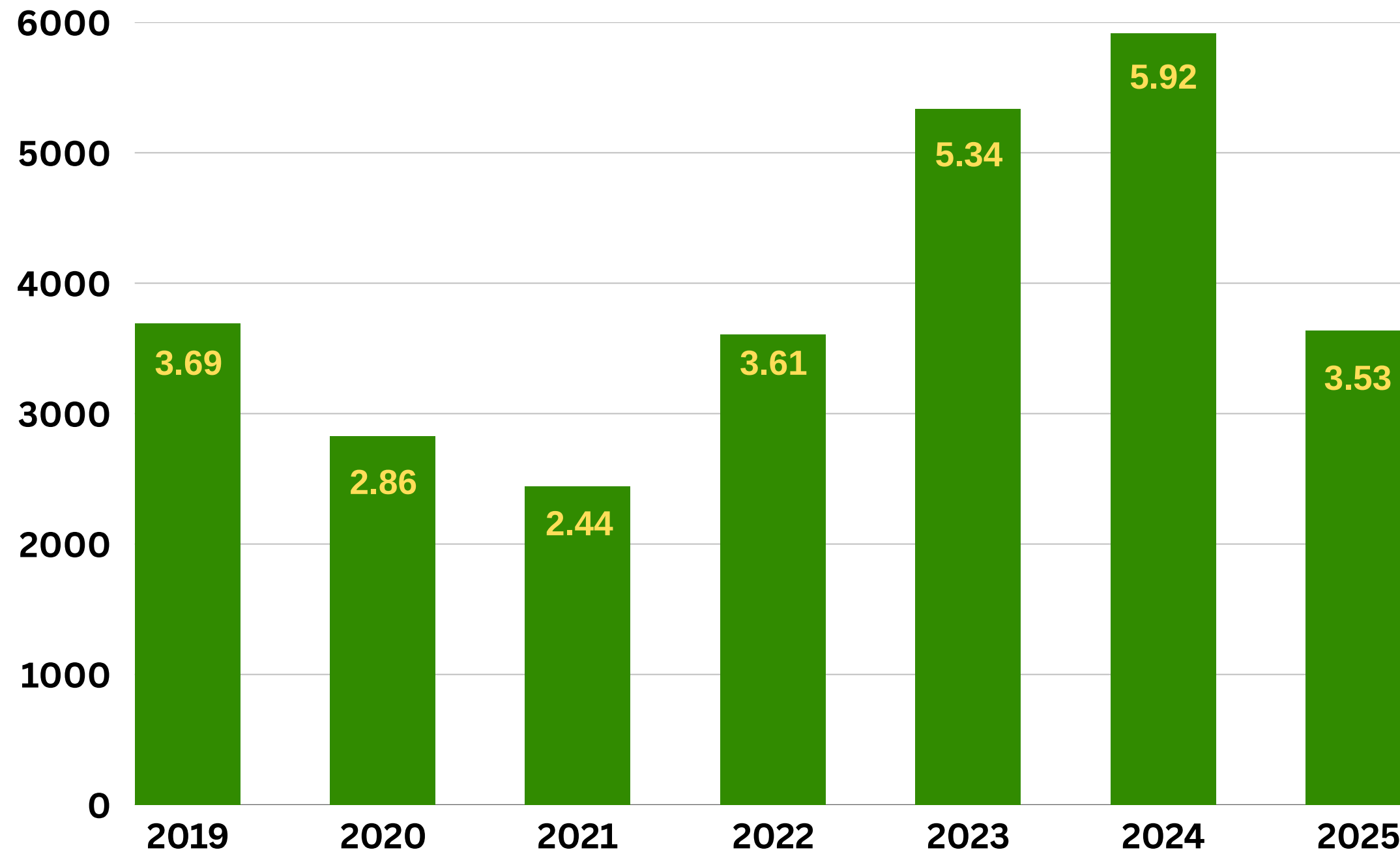
- Construction of the weighbridge has been completed.
- Coal handling is being carried out at the ROM Jetty site.
- Coal mining operations are ongoing.
- Coal sales continue for both export and domestic markets.

# IBP Infrastructure Capacity 2025



NO	Port / Jetty	Location	Crusher Capacity (tph)	Maximum Stockpile Storage Capacity	
				Raw (Tonnes)	Crushed (Tonnes)
1	Sungai Berlian Jaya - 1	Palaran Subdistrict	500	40,000	10,000
2	Sungai Berlian Jaya - 2		270	40,000	5,000
3	Sungai Berlian Jaya - 3		350	50,000	-
4	PSM		300	400,000	20,000
		650			
5	La Tahzan	Embalut Separi	350	80,000	-
6	Surya Jalur Anugerah	Loa Janan	500	60,000	10,000

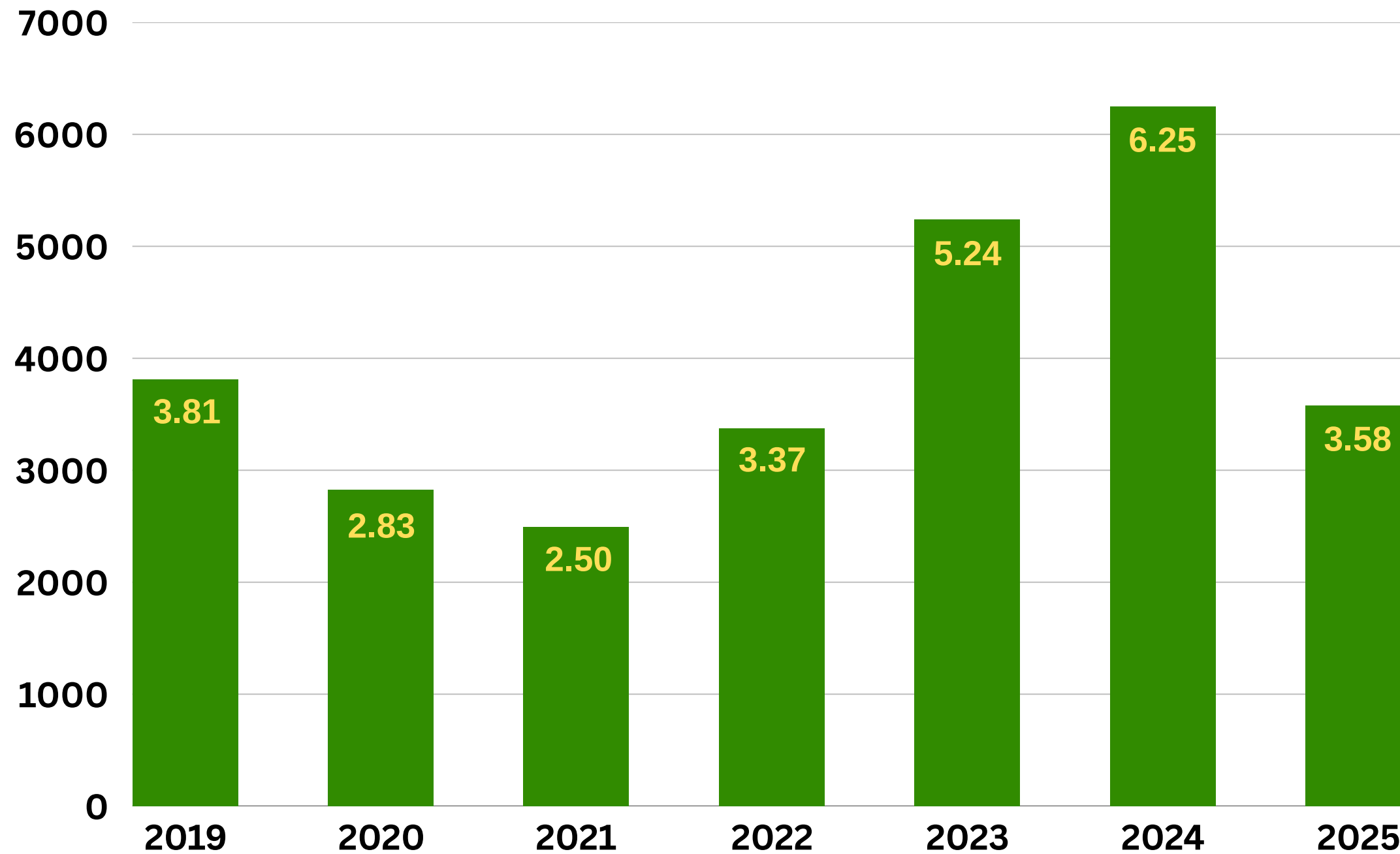
# IBP Production Volume 2019–2025



*Production volume in million tonnes*

- Coal production in 2025 reached 3.53 million tonnes.
- The movement in production volume during 2025 was in line with the impact of extreme weather in Samarinda, coupled with volatility in global coal prices, which also affected operational activities.

# IBP Sales Volume 2019–2025

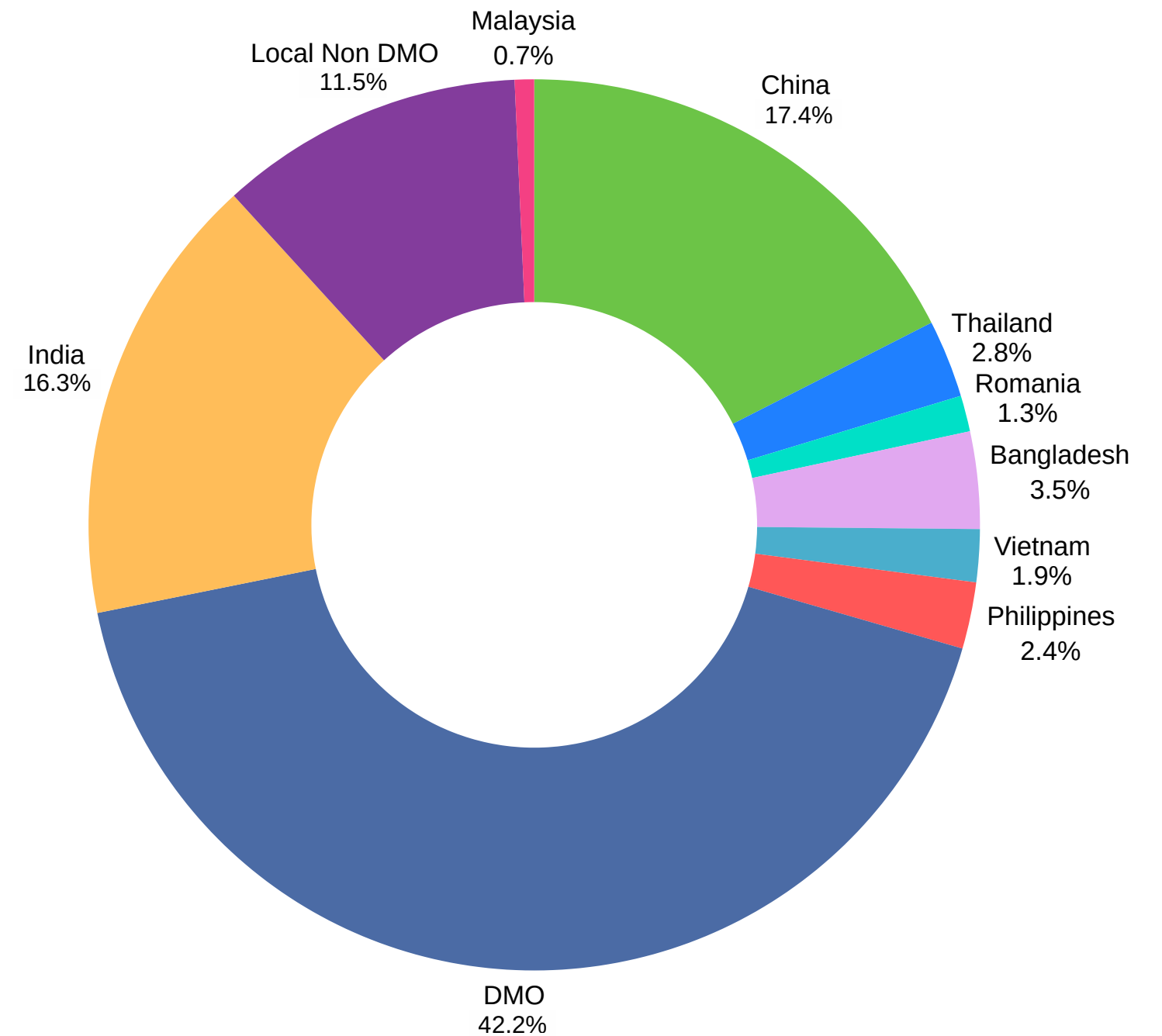


Sales volume in million tonnes



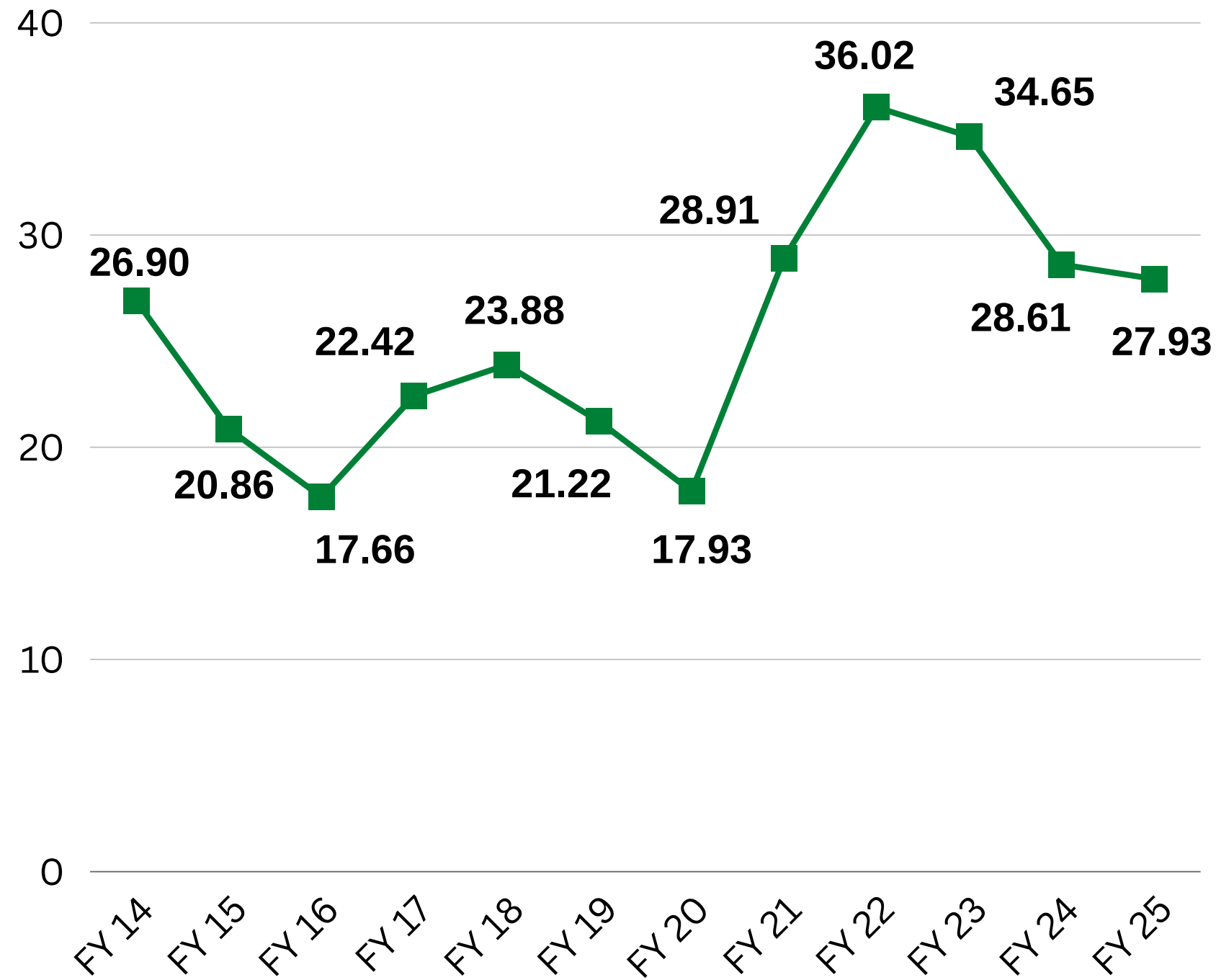
- KKGI recorded coal sales volume of 3.58 million tonnes in 2025, reflecting the decline in production volume during the year.

# Export/Domestic Destination Countries 2025



Coal sales in million metric tonnes (MT)

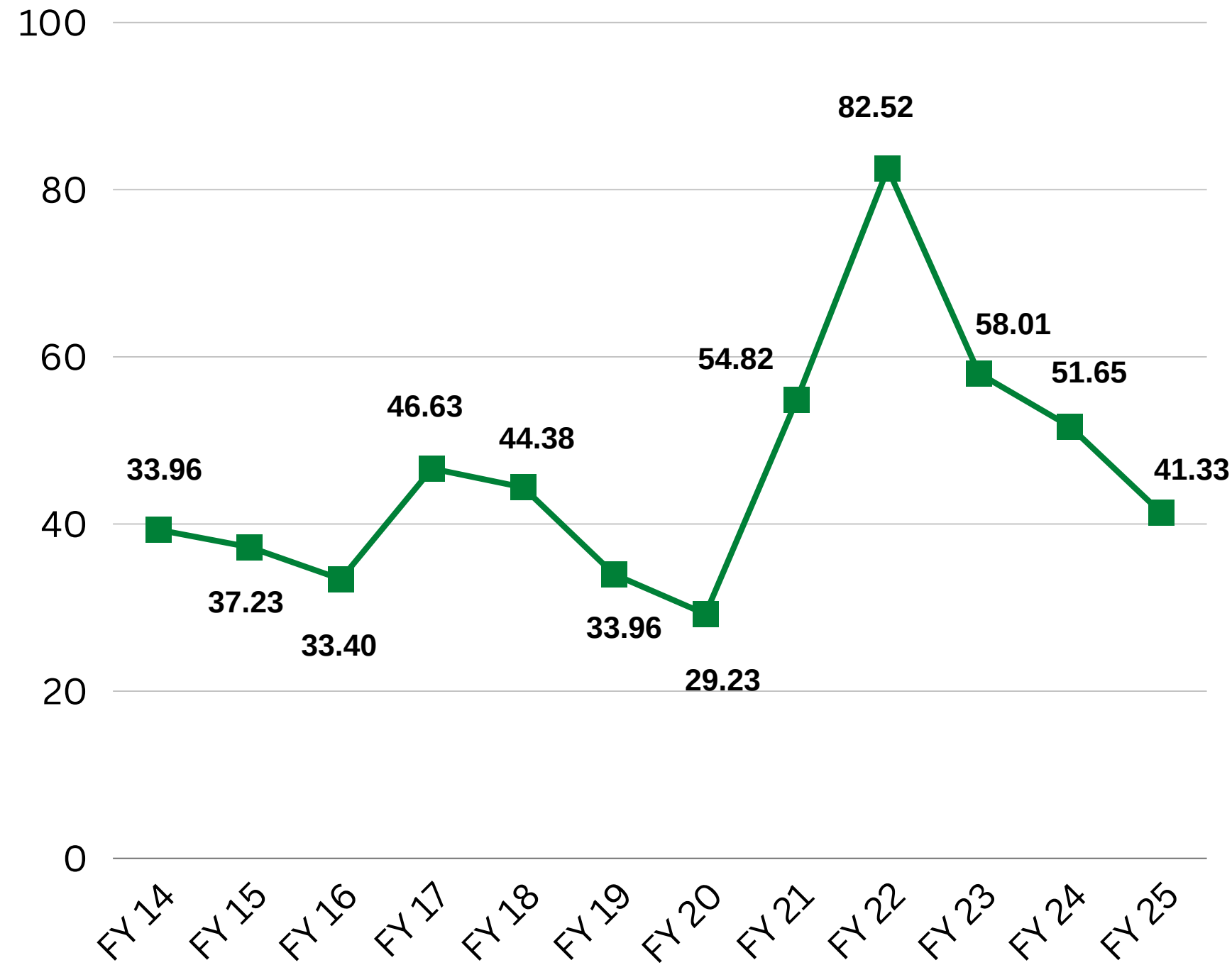
# Cash Cost IBP (US\$/MT)



- Cash cost declined year-on-year to US\$27.93/MT, reflecting improved efficiency in mining operations.

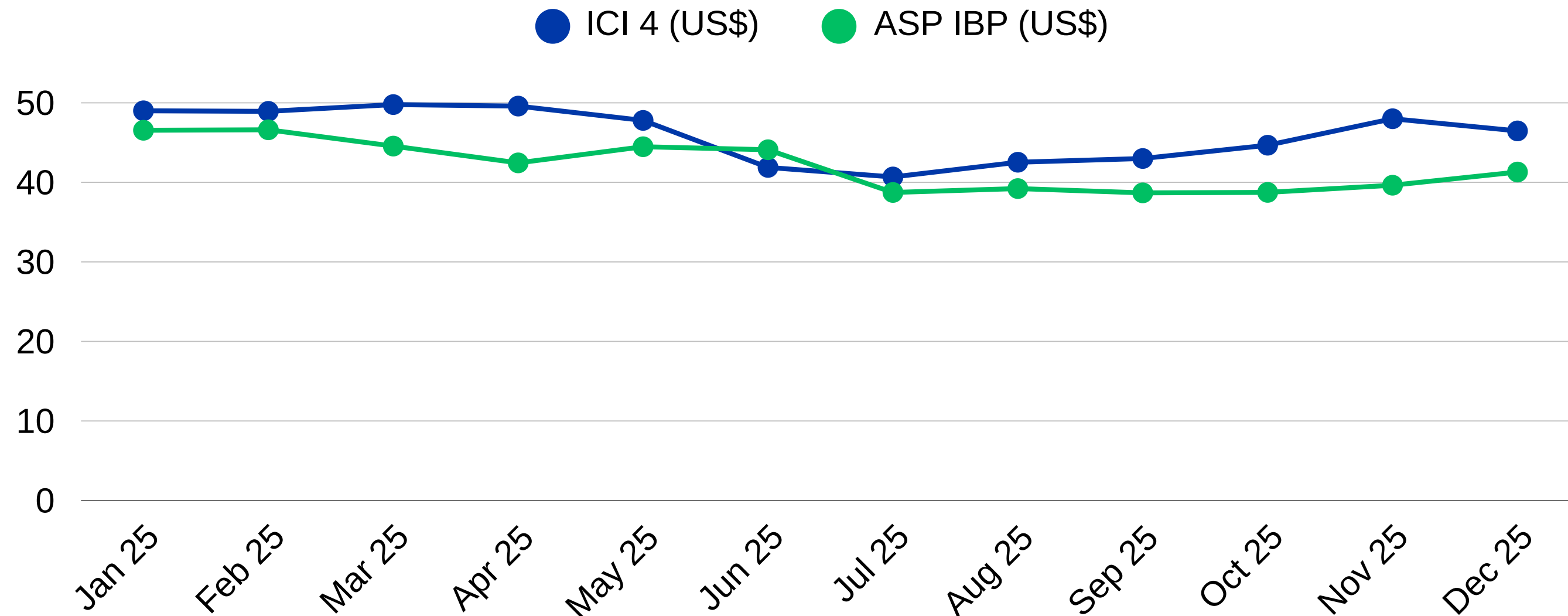
Cash cost includes royalties

# IBP Average Selling Price (US\$/MT)



- IBP's average coal selling price declined in 2025, reflecting the downward trend in global coal prices.

# Coal Price Trend



Indonesia Coal Index 4 vs IBP ASP

# Summary of Statements of Profit or Loss



	2025 (US\$ Million)	2024 (US\$ Million)	Percentage Change
<b>Revenue</b>	153.12	326.80	-53.15%
<b>Gross Profit</b>	26.08	103.14	-74.72%
<b>Operating Profit</b>	5.76	64.82	-91.12%
<b>Net Profit After Tax</b>	2.04	40.16	-94.92%

# Financial Ratios



Ratio	2025	2024
Gross Margin	17.03%	31.56%
Operating Margin	3.76%	19.84%
Net Profit Margin	1.33%	12.28%
ROA	1.12%	19.21%
ROE	1.35%	24.96%
Debt-to-Equity	2.14%	1.66%

# Initiatives to Enhance Future Performance



In 2026, PT Resource Alam Indonesia Tbk, through PT Insani Baraperkasa and PT Loa Haur, plans to produce and sell 2.3 million tonnes of coal, in accordance with the Ministry of Energy and Mineral Resources' policy aimed at reducing national production quotas. Furthermore, the Ministry is offering companies the chance to apply for increased production.



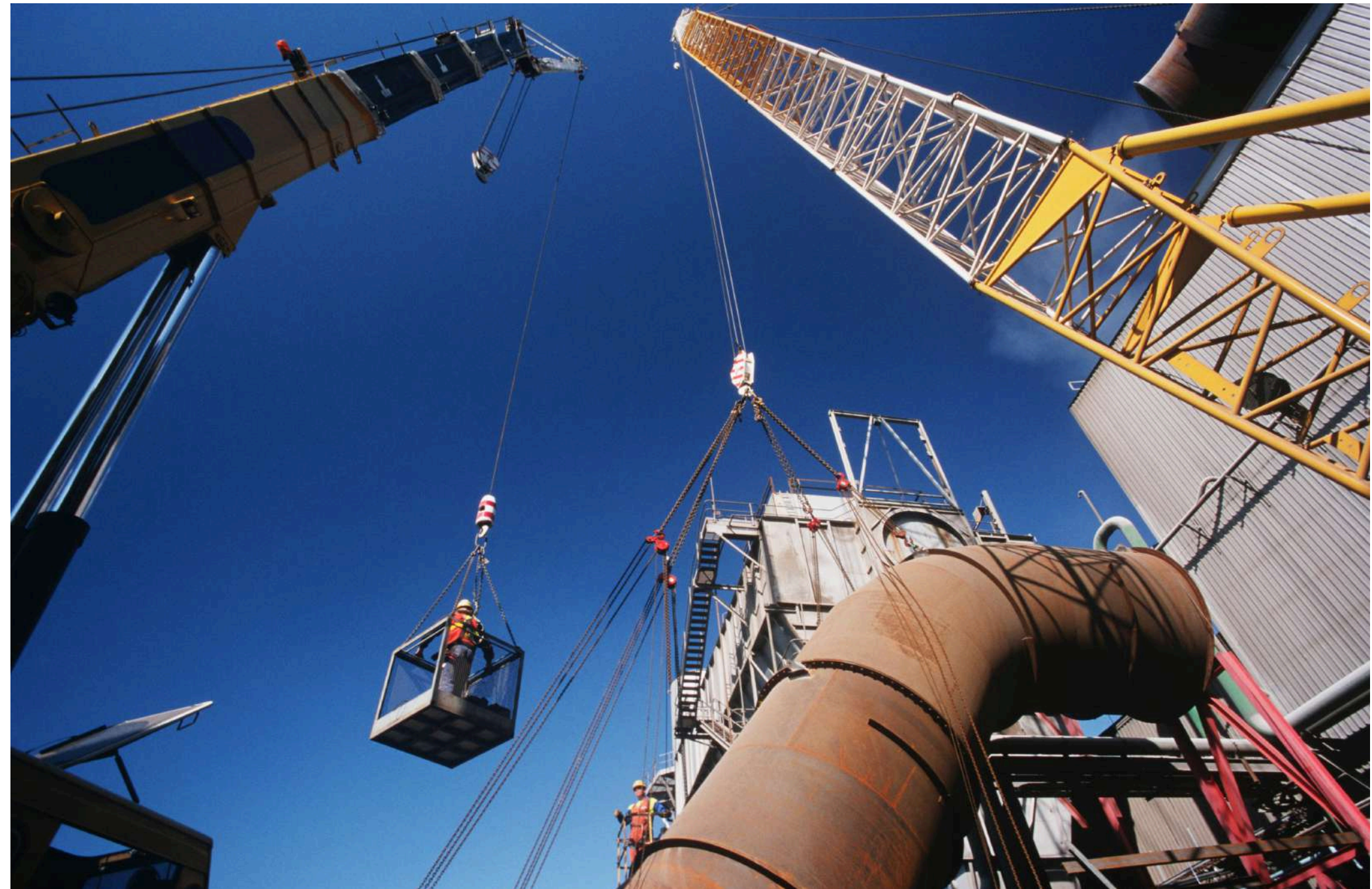
# Initiatives to Enhance Future Performance

## PT Trans Bahtera Pioneer

- The strategic partnership between the Company and PT Trans Power Marine Tbk (TPMA) through PT Trans Bahtera Pioneer (TBP) began to deliver a positive contribution in 2025.
- Going forward, the Company intends to further enhance the effectiveness of this collaboration by increasing the frequency of coal transportation to support value creation and strengthen overall business performance.



In addition, the Company has established a new subsidiary to engage in the mineral trading business, as part of its efforts to strengthen its business structure and optimise future business opportunities.





- PT Resource Alam Indonesia Tbk (KKGI) has been appointed by the Ministry of Public Works as the project initiator for the Bener Dam Mini Hydro Power Plant Project in Purworejo Regency, Central Java.
- PLTM Cicatih plans to establish a waste processing facility as part of its commitment to social responsibility and future business development.
- PT Bias Petrasia Persada is exploring a potential collaboration with I-REC (International Renewable Energy Certificate) in the carbon trading sector for the 2024–2029 period.

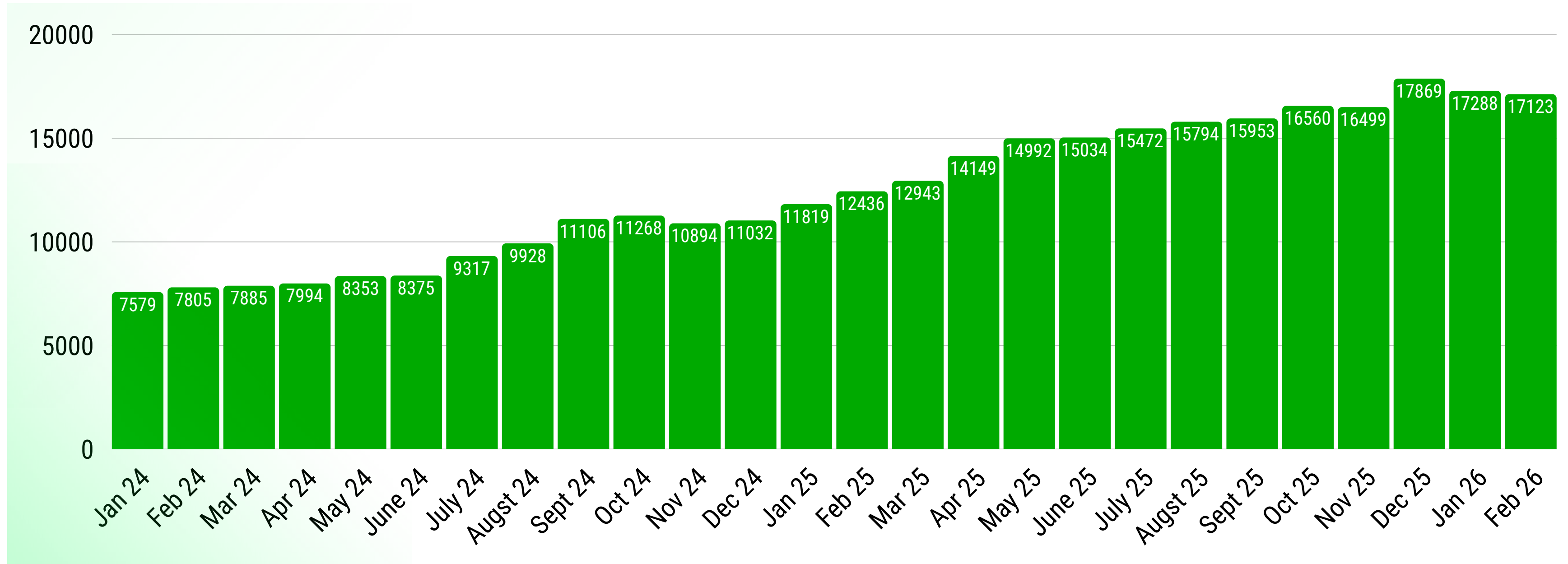
# Future Focus



- PT Resource Alam Indonesia Tbk, through its RAIN REALTY business segment, has undertaken the groundbreaking and grand launching of its project located in Handil Bakti, Palaran Subdistrict, Samarinda, East Kalimantan.
- The Company is targeting the initial handover of Samara Residence and the official opening of the Paras Icon show house by the end of June 2026, in line with the continued progress of project construction.
- The Company currently holds a sizeable land bank of more than 3,000 hectares in Samarinda and Kutai Kartanegara.



## KKGI Shareholders



Based on KSEI data, the number of KKGI shareholders increased by **80.75%** from **January 2024** to **February 2026**, reaching **17,123**.

# Awards

Throughout 2025, the Company received a number of notable awards and recognitions, including:



- Forbes Asia's Best Under A Billion 2025
- Best ASEAN Chinese Entrepreneur - ASEAN Chinese Business Leaders Summit 2025



- CSR Gold Award 2025 from the Regent of Kutai Kartanegara – for participation in a CSR programme supporting the expansion of National Health Insurance membership coverage.
- Award from the Head of Batuah Village – for participation in a CSR programme supporting the development of Batuah Village in 2025.
- Top CSR Award 2025 #STAR 4.
- Top Leader on CSR Commitment 2025 PPM Award.
- Subroto Award PPM 2025.
- Award in the field of Occupational Safety and Health (OSH) in East Kalimantan 2025.
- Satya JKN Award 2025



# Awards



Presentation of awards by the Regent of Kutai Kartanegara to companies that contributed to the successful implementation of Kutai Kartanegara Regency Government programmes, particularly in the education sector.



PT Insani Baraperkasa (IBP) received three prestigious awards in the field of Occupational Safety and Health (OSH) at the East Kalimantan 2025 event.



PT Insani Baraperkasa received the Top CSR Award 2025 STAR 4 and Top Leader on CSR Commitment 2025.



PT Insani Baraperkasa (IBP) received the JKN Award 2025.

# Community Development and Empowerment Program



## EDUCATION

- Scholarships for SMK Wikrama Garut.
- Operational support for Insani Cindekia Kindergarten/Preschool.



SMK Wikrama Garut Scholarship



Insani Cindekia Kindergarten/Preschool

## Education, Skills Training, and Basic Competencies

- Assistance for Bhakti Jaya Football School.
- Support for the development of East Kalimantan Archery Sports.



East Kalimantan Archery Team



BPJS Health

18 Sep 2025 10:26:38  
50M 510415 9933344  
Jalan Soekarno Hatta  
Loa Janan Ulu  
Kecamatan Loa Janan  
Kabupaten Kutai Kartanegara  
Kalimantan Timur

## HEALTH

### Health of Communities Around the Mining Area

- Routine integrated health post (Posyandu) activities, health guidance, and training.
- BPJS Health assistance for underprivileged residents.



Posyandu Activities



Bhakti Jaya Football School

# Community Development and Empowerment Program



## REAL INCOME LEVEL OR EMPLOYMENT

### Fisheries, Livestock Fattening, and Village Operations

- Grand tomato harvest event with the Chairman of KTNA.
- Provision of water pump equipment.
- Qurban cattle fattening.
- Training and support for 10 maggot demonstration plot units.
- Cattle breeding development in the Separi Block area.
- Planting of 700 citrus seedlings in the Separi Block area.
- Gourami aquaculture.



## ECONOMIC SELF-RELIANCE

- Symbolic signing of a business partnership between large-scale enterprises and MSMEs/cooperatives.



# Community Development and Empowerment Program

## SOCIAL AND CULTURAL

### Village Anniversary, Eid Mubarak, Independence Day, Natural Disasters, and Qurban Animals

- Distribution of Eid care packages.
- Qurban cattle fattening programme.
- Village anniversary celebrations.
- Commemoration of the 80th Anniversary of the Republic of Indonesia.
- Support for disaster relief efforts in Sumatra.

## ENVIRONMENT

- Post-flood river normalisation.
- Drainage normalisation in RT 08, Tani Bhakti Village.
- Tributary normalisation programme in Tani Bhakti Village.
- Installation of PDAM water supply connections for residents of RT 07 and RT 11, Pondok Ore.

## INSTITUTIONAL

- Implementation of hamlet and village Musrenbang forums.
- PHBI activities, village anniversary celebrations, and Ramadan Safari activities.



# Community Development and Empowerment Program



## INFRASTRUCTURE

- Earthworks for the agricultural road in RT 05
- Earthworks for Pondo Ore Road in RT 07, Tani Bhakti Village
- Laterite material support programme for the Manunggal Jaya arterial road
- Road concreting programme in RT 02, Karya Bhakti Hamlet, Tani Bhakti Village
- Temporary road diversion assistance programme in response to the landslide in RT 13
- Construction of a retaining structure along the Muara arterial road at Km 8
- Embankment rehabilitation
- Rehabilitation of landslide-affected roads
- PDAM water supply installation



Before the road concreting programme in Tani Bhakti Village was carried out



After the road concreting programme in Tani Bhakti Village was completed



Before the construction of the temporary diversion road due to the landslide in RT 13



After the temporary diversion road project due to the landslide in RT 13 was completed

# Q&A





Thank you


# Social Media

The following are the official social media accounts of PT Resource Alam Indonesia Tbk (KKGI).

 [www.raintbk.com](http://www.raintbk.com)

 [@rain.tbk](https://www.instagram.com/rain.tbk)

 [youtube.com/@kkgiinvestorrelation](https://www.youtube.com/@kkgiinvestorrelation)

 [Resource Alam Indonesia Tbk, PT](https://www.linkedin.com/company/resource-alam-indonesia-tbk-pt)

 [@KKGI Investor Relation](https://www.facebook.com/KKGI-Investor-Relation)

 [@rain.tbk](https://www.tiktok.com/@rain.tbk)

